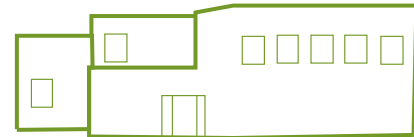


# What are the steps to brownfield cleanup?

When a property has suspected contamination, the process for site assessment, cleanup, and eventual reuse of the site can seem daunting, in part because funding opportunities can hinge on whether the process is done in the proper order.

The Iowa Department of Natural Resources (IDNR) has established a basic order of events for the evaluation and redevelopment of brownfields sites.

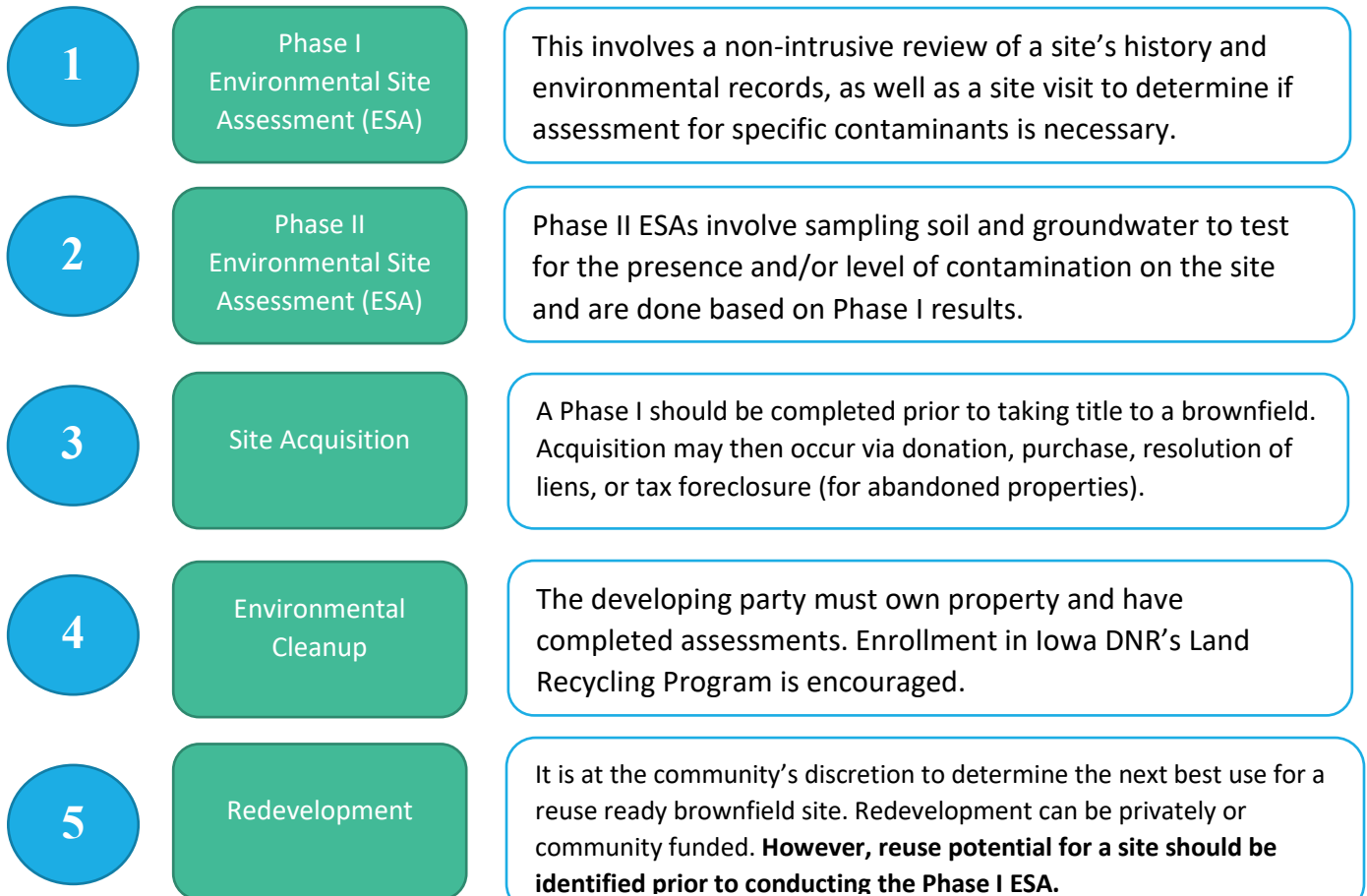
These steps are required for the Iowa Land Recycling Program eligibility and mirror federal requirements.



## Basic brownfields definition

The Environmental Protection Agency (EPA) defines brownfields as “real property, the expansion, redevelopment, or reuse of which may be complicated by the presence or potential presence of a hazardous substance, pollutant, or contaminant.”

## Redevelopment Timeline



**DISCLAIMER:** Though this project has been funded, wholly or in part, by EPA, the contents of this document do not necessarily reflect the views and policies of EPA.

## Redevelopment scenarios

Who should be in charge of a brownfields redevelopment project? How should funding be handled? The answers to these questions depend on the approach taken to redevelopment, which generally follows one of three models.

*Private Redevelopment:* A developer takes responsibility for the entire redevelopment project, and conducts Phase I and Phase II assessments as appropriate. The developer completes the cleanup activities, meeting the requirements of the Iowa Land Recycling Program.

*Public-Private Redevelopment:* A community and redeveloper form a partnership and combine their resources to accomplish the redevelopment. Level of involvement varies, but often a public entity will sponsor the project and find initial funding for assessment. A private-sector developer will then fund and manage pre-development and construction.

*Public Redevelopment:* Communities take responsibility for the entire assessment and cleanup process, then may sell the property to a developer or choose to keep the property post-cleanup for public use.

## Additional Resources

[Iowa DNR](#)

This timeline is a simplified outline of steps as required by the Iowa DNR's Land Recycling Program. For more information regarding the program: [Iowa LRP](#)

[EPA Brownfields Redevelopment](#)

Outside of assessment, cleanup, and acquisition, there are steps to real estate development that can occur before or after testing and cleanup. For more information on redevelopment planning post cleanup refer to EPA's Brownfields Redevelopment Documents:

[EPA Brownfields Redevelopment Planning](#)

## Contact Us

**Dawn Danielson**

East Central Intergovernmental Association  
7600 Commerce Park  
Dubuque, IA 52002

[ddanielson@ecia.org](mailto:ddanielson@ecia.org)

563-690-5772

[www.ecia.org/brownfields/](http://www.ecia.org/brownfields/)

[www.ecia.org](http://www.ecia.org)



*Though this project has been funded, wholly or in part, by EPA, the contents of this document do not necessarily reflect the views and policies of the EPA*



**DISCLAIMER:** Though this project has been funded, wholly or in part, by EPA, the contents of this document do not necessarily reflect the views and policies of EPA.